

## 1 Requirements

evSymmetry Access Control Plug-in can be used on any Windows- or Linux-based exacqVision Enterprise Server version 3.7 or later. However, it is recommended that you use the latest version of exacqVision software.

## 2 Installation

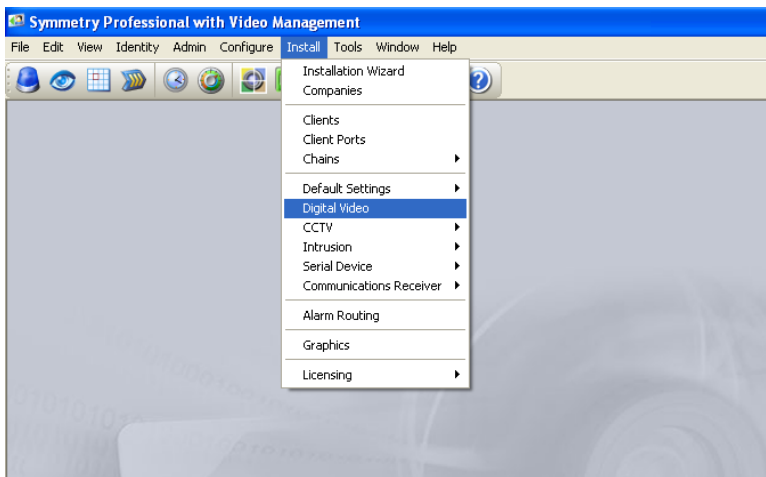
1. Download the latest evSymmetry Access Control Plug-in to the Symmetry server from the Exacq website at <http://www.exacq.com/support/downloads.html>.
2. Ensure the Symmetry software (version 6.2 or later) is properly installed and operational per Symmetry documentation.
3. It is recommended that you create a dedicated user account in exacqVision (eV) for use by the Symmetry server:
  - a. Start the eV Client software.
  - b. In the top-left corner, select the Configuration screen tool icon.
  - c. Expand the tree for the server to be integrated with the Symmetry server and select Users.
  - d. On the Users screen, select New then add a user in the user group Live + Search.
  - e. If PTZ cameras will be controlled from the Symmetry software, enable Allow PTZ.
  - f. Note the username and password entered on this screen for use during setup.
  - g. By default, eV enables new users to access all cameras. If some cameras should NOT be available to the Symmetry server, expand All Video Inputs in the Custom User Permissions section and deselect cameras as appropriate.
  - h. Click Apply.
4. From the eV server tree, select System Setup and then the Network tab. Note the IP address of the eV server. Exit the eV software.
5. Using the Symmetry services manager, stop the SMS service.
6. Execute the evSymmetryInstaller.msi file on the SMS server to copy and install all necessary files to the SMS server. Then register the eV interface application with the Symmetry software.

**NOTE:** If you are installing evSymmetry on a Windows 64-bit (x64) operating system, complete the following additional steps (otherwise, go to step 7):

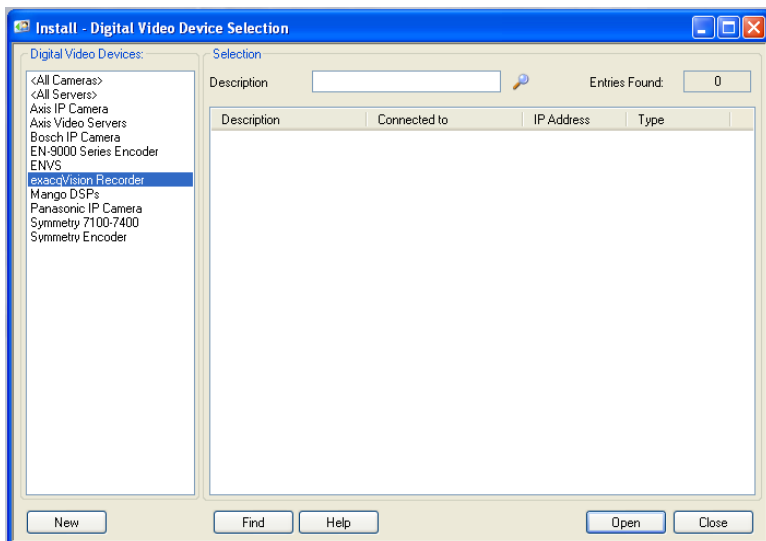
- a. Open an elevated administrator command prompt.
  - b. Go to the directory c:\Program Files (x86)\exacqVision\evSymmetry.
  - c. To register the exacqVision plug-in, type **regsvr32 evSymmetry.dll** and press Enter.
  - d. Type **Regplugin** and press Enter.
  - e. Close the command prompt.
7. Restart the server, or use the Symmetry control panel to restart the SMS service.

## 3 Configuration

1. Log in to the SMS client with an Administrator account and select Digital Video from the Install menu.



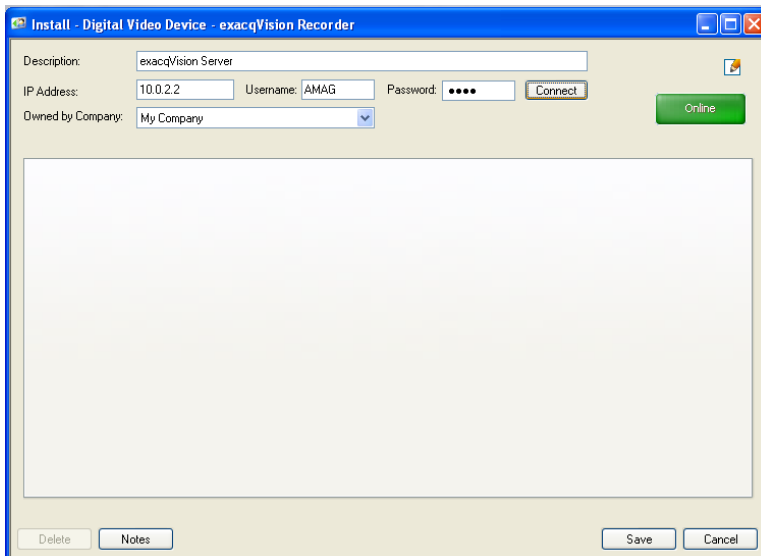
2. On the left side of the Install window, select the new exacqVision server that was created during the installation process. Click Open.



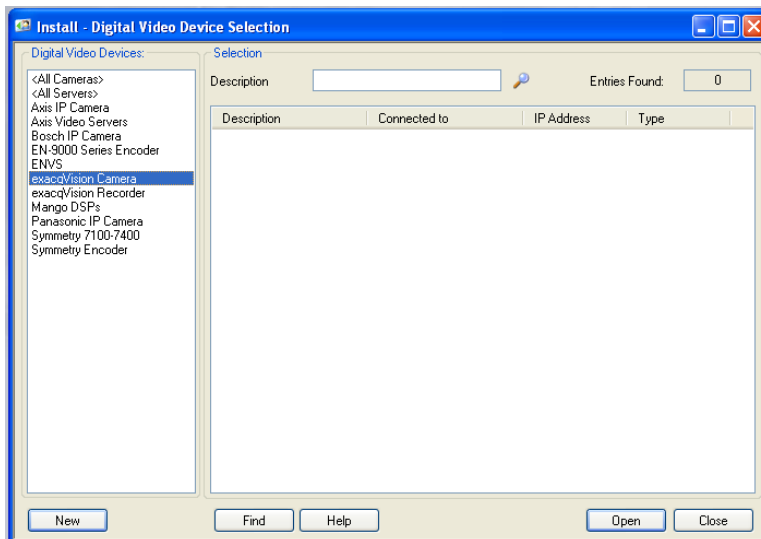
3. In the Install window, enter the IP address, username, and password created during setup. The description should be a unique name for each eV server. Click Connect. If the status indicator icon is green and displays the word Online, click Save and exit the screen.

If the connection test fails:

- a. Ping the eV server from the SMS server to ensure network connectivity.
- b. Ensure the IP address, username, and password are correct.



4. The Install window should now display an exacqVision Camera option in the Digital Video Devices list. Select that option and click New.



- The Install window allows configuration of cameras within the SMS software. For Video Recorder, select the server; for Video Channel, select the appropriate channel of video.

Finish the camera configuration per the SMS user guide instructions. If PTZ presets are configured, the window must be saved and closed before they will take effect. Repeat for all applicable cameras.

